

ST ANNE'S RC PRIMARY AND NURSERY SCHOOL

CLARENDON ROAD AUDENSHAW MANCHESTER M34 5QA

HEADTEACHER: MRS S CLARKE

TEL: 0161 370 8698 FAX: 0161 371 1964

E-MAIL: head@st-annes-audenshaw.tameside.sch.uk

WEBSITE: www.st-annes-audenshaw.tameside.sch.uk



Dear Parents/ Carers,

9th October 2024

RE: Attendance and punctuality for this academic year

This academic year every pupil must have an attendance of 96%+ in order for them to comply with the government regulation. When a child's absence falls below this figure it has a dramatic impact on their learning.

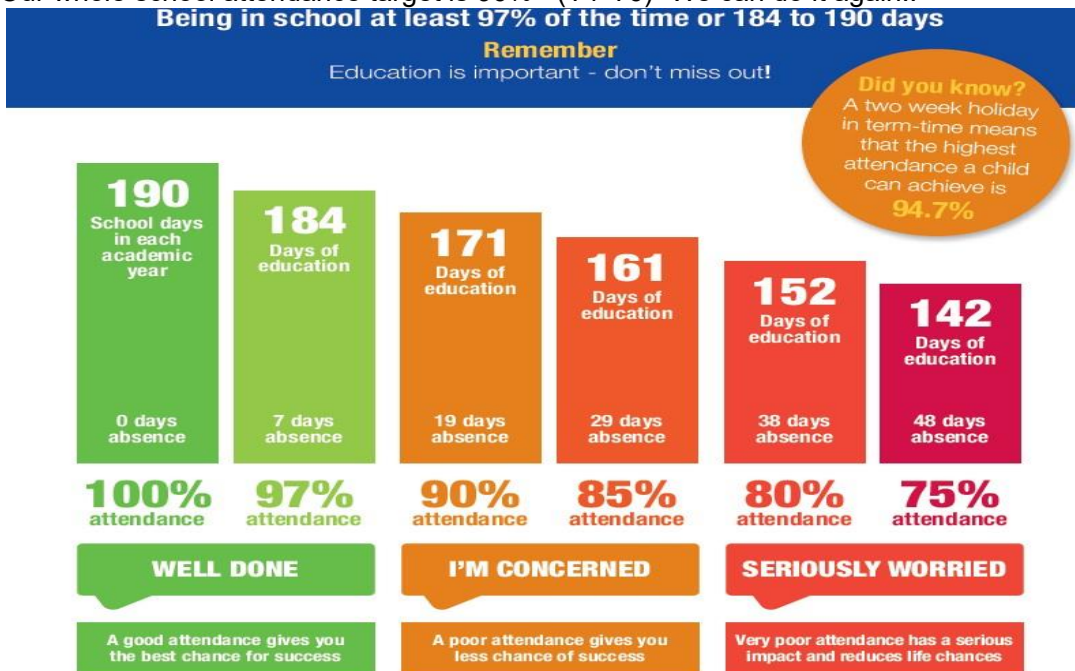
Children attending school is statutory and any absences will follow our attendance procedure. We will be monitoring children's attendance closely and any child whose attendance falls below 92% will need to provide medical evidence for future absences. Without medical evidence, these absences will be unauthorised.

Any holidays taken during term time will be unauthorised, and fines will be issued by Tameside Council. With so much time missed this year due to Covid-19, we want to ensure our children have the best chance to catch-up by being in school.

For exceptional circumstances, please arrange a meeting with Mrs Clarke to discuss.

In 2023-24 our attendance figure (Y1-Y6) was 96.27%, which is absolutely amazing!

Our whole school attendance target is 96%+ (Y1-Y6)- We can do it again!!



What can parents/ carers do to help?

- Ensure your child attends school every day and on time.
- If your child is not well enough to attend, contact the school office by 10am on the first day of absence. This phone call is a safeguarding check and confirms to us that your child is safe, but it will still be an unauthorised absence unless medical evidence is produced.
- Try to make dental and medical appointments outside of school time or at weekends.
- Take family holidays during the school holiday. We are unable to authorise term time holidays.
- Contact us immediately if you need help or support with your child's attendance or punctuality.

Our school incentives and initiatives to address this are:

ATTENDANCE CUP (Weekly)

We have an attendance cup which is presented to the class who have the best weekly attendance. They also receive an extra Friday PE slot as a treat. This encourages the children to work as a class, unite them in the common goal of having excellent attendance and to benefit from being at school.

PUNCTUALITY

Many of you have excellent punctuality habits and bring your child to school on time every day but we still have a number of children who arrive to school late each day. If your child is late, you must make the office aware and wait outside the office doors (due to Covid-19 restrictions) with them until a member of teaching staff is able to collect them. This disrupts learning time, so we do insist that punctuality is extremely important. If you are collecting your child early (before the end of the school day), you must provide the office with evidence of the appointment/ reason for collection.

CINEMA/ BOWLING TRIP (At the end of the academic year)

All children who have 100% attendance through to the end of the academic year, will be treated to a trip to the cinema or bowling. This applies to every child from Nursery to Year 6.

Thank you for your continued support,



S Clarke

Acting Headteacher